

D1	D2	L1	L2	ALLOY	REF	CODE
3	1,5	9	30	CuCrZr	2340	80001526
3	1,5	9	30	CuCrZr	2340EXT	80001457
3	1,5	9	30	CuCoBe	2340CB	80001460
6	3	12	45	CuCrZr	2650	80001458
6	3	12	45	CuCoBe	2650CB	80001528
12	6	20	80	CuCrZr	12100	80001529
12	8	25	100	CuCrZr	16100	80001530

Electrode with tip



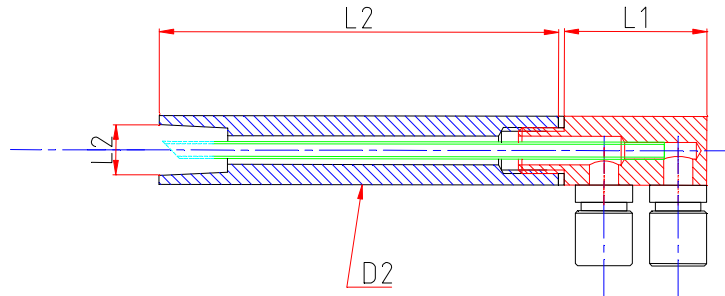
D1	D2	L1	L2	ALLOY	INSERT	REF	CODE
3	1,5	3	33	CuCrZr	MOLY	M340	80001455
3	1,5	3	30	CuCrZr	W	W340 DIA 3MM	80001531
6	3	5	50	CuCrZr	MOLY	M6503	80001456
6	3	5	50	CuCrZr	W	W6503	80001532
6	4	5	50	CuCrZr	MOLY	M6504	80001533
6	4	5	50	CuCrZr	W	W6504	80001535
12	4	6	86	CuCrZr	MOLY	M12104	80001453
12	4	6	86	CuCrZr	W	W12104	80001478
12	6	6	86	CuCrZr	MOLY	M12106	80001454
12	6	6	86	CuCrZr	W	W12106	80001477

Electrodes for hand tools

	MODEL	ÉLECTRODE REFERENCE	ALLOY	INSERT	CODE
Pens	CS	CS 340	CuCrZr		80001461
	CS	CS M340	CuCrZr	MOLY	80001597
	CS	CS W340	CuCrZr	W	80001599
	CS ASP	CS 340 ASP	CuCrZr		80001462
	CSL	CS 650	CuCrZr		80001463
	CSL	CS M6503	CuCrZr	MOLY	80007221
	CSL	CS M6504	CuCrZ	MOLY	80007222
	CSL	CS W6503	CuCrZr	W	80023012
	CSL ASP	CS 650 ASP	CuCrZr		80001540
	CSE	CSE 12100	CuCrZr		80001464
	CSE	CSE M12104	CuCrZr	MOLY	80001453
	CSE	CSE W12104	CuCrZr	W	80001478
	CSE	CSE M12106	CuCrZr	MOLY	80001454
	CSE	CSE W12106	CuCrZr	W	80001477
Handles	PS 5	PS 340	CuCrZr		80001468
	PS 10	CS 650	CuCrZr		80001463
	PS 12	PS 650	CuCrZr		80001543
Tweezers	PIM 30	2340	CuCrZr		80001526
	PIM 30 R	2650	CuCrZr		80001458
	PIM 15	2650 EXT	CuCrZr		80001457
	PIA 45	1070 Sup. PIA45	CuCrZr		80003974
		1030 Inf PIA 45	CuCrZr		80003973
Brasing Tweezers	PIMB 30 R	C 14 EG34GL	GRAPHITE		80001547
	PIMB 35 R	C 40 EG34GL 40 x 35 x 19 MM	GRAPHITE		80001549

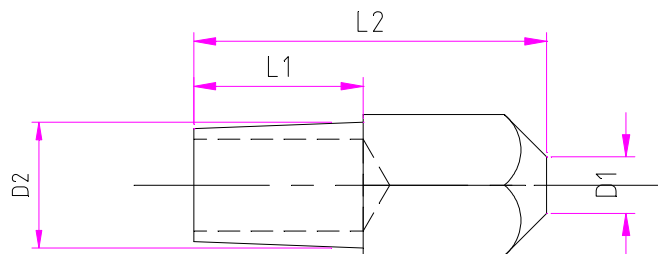
Water cooled electrodes MODEL EC (Conical tip)

Eletrode holders diameter 12 - 16 et 30



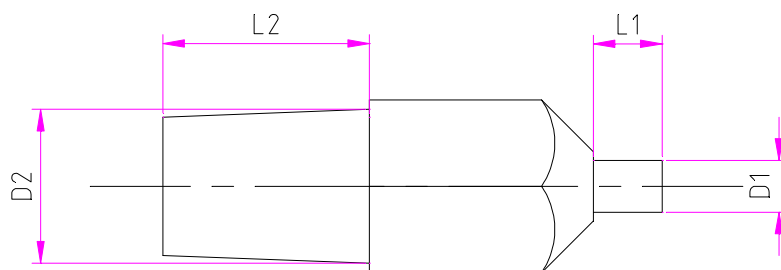
D1	D2	L1	L2	ALLOY	REF	CODE
8,9	12	25	70	CuCrZr	CEC 12 70	80001770
11,8	16	40	80	CuCrZr	CEC 16 80	80001771
11,8	16	40	200	CuCrZr	CEC 16 200	80001772
11,8	16	40	465	CuCrZr	CEC 16 465	80001773
19	30	37	203	CuCrZr	CEC 30 200 PE SE 50	80001776

Electrodes for CEC 12 - 16 et 30



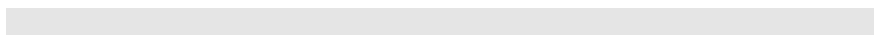
D1	D2	L1	L2	ALLOY	REF	CODE	DRAWING N°
4	8,9	12	25	CuCrZr	EC 122	80001593	80001593
4	8,9	12	25	CuCoBe	EC 123 0110225	80001602	80001602
12	11,8	18	34	CuCrZr	EC 134 0212134	80001472	80001472
5	11,8	18	34	CuCrZr	EC 234 0212234	80001473	80001473
5	11,8	18	34	CuCoBe	EC 234 CB 0212234B	80001474	SEE 80001473
5	11,8	18	34	CuCrZr	EC 334 0212334	80001541	Off-centred elec.
20	19	27	50	CuCrZr	EC 606 07201150	80001475	80001475-06A
6	19	27	50	CuCrZr	EC 622 0720250	80001476	80001476-001

Tip-on electrodes for CEC 12



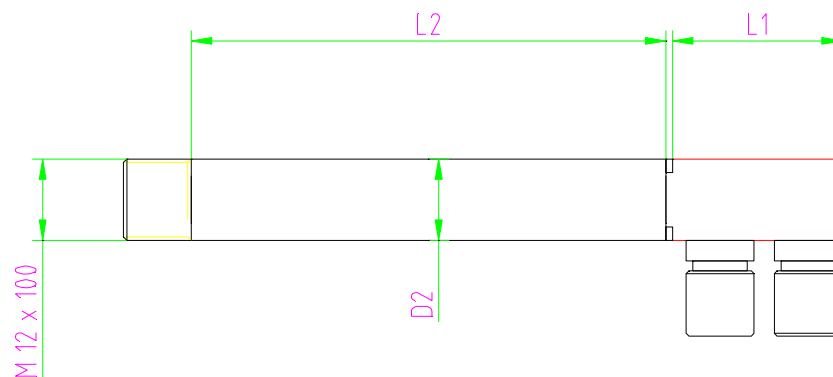
D1	D2	L1	L2	ALLOY	INSERT	REF	CODE
3	8,9	4	12	CuCrZr	MOLY	ECM3	80001545
4	8,9	4	12	CuCrZr	MOLY	ECM4	80001470
6	8,9	4	12	CuCrZr	MOLY	ECM6	80001548
3	8,9	4	12	CuCrZr	W	ECW3	80001557
4	8,9	4	12	CuCrZr	W	ECW4	80001465
6	8,9	4	12	CuCrZr	W	ER122	80001566

SPECIAL GREASE FOR CONE – Jar of 250 Grammes : 243 F



WATER COOLED ELECTRODES MODEL EV (Screwed tip)

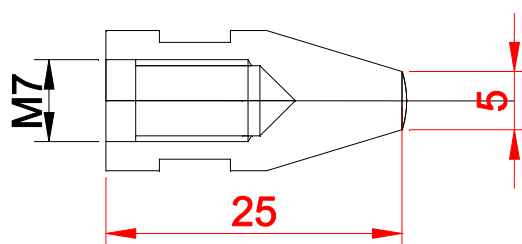
Electrode holders



D1	D2	L1	L2	REF	CODE
12 PAS 100	12	25	70	CEV 12 70 12	80001765
12 PAS 100	16	40	80	CEV 16 80	80001766
12 PAS 100	16	40	200	CEV 16 200	80001467
12 PAS 100	16	40	465	CEV 16 465	80001468

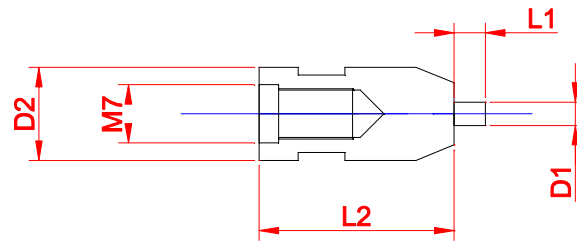
NUT FOR CEV ... : 80003070

Electrodes for CEV 1270 - 7 copper alloy



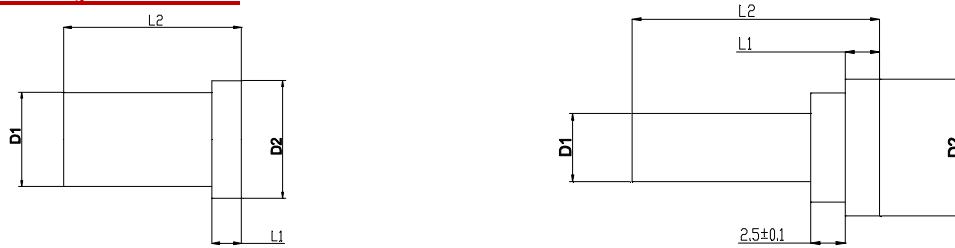
D1	D2	L1	L2	ALLOY	REF	CODE
5	12	25		CuCrZr	EV 122	80001558
5	12	25		CuCoBe	EV 123	80001559

Electrodes for CEV 1270 - 7 with tip



D1	D2	L1	L2	ALLOY	INSERT	REF	CODE
3	12	4	25	CuCrZr	MOLY	EVM3	80001560
4	12	4	25	CuCrZr	MOLY	EVM4	80001561
6	12	4	25	CuCrZr	MOLY	EVM6	80001562
3	12	4	25	CuCrZr	W	EVW3	80001563
4	12	4	25	CuCrZr	W	EVW4	80001564
6	12	4	25	CuCrZr	W	EVW6	80001565

Electrodes ER for CEV 16



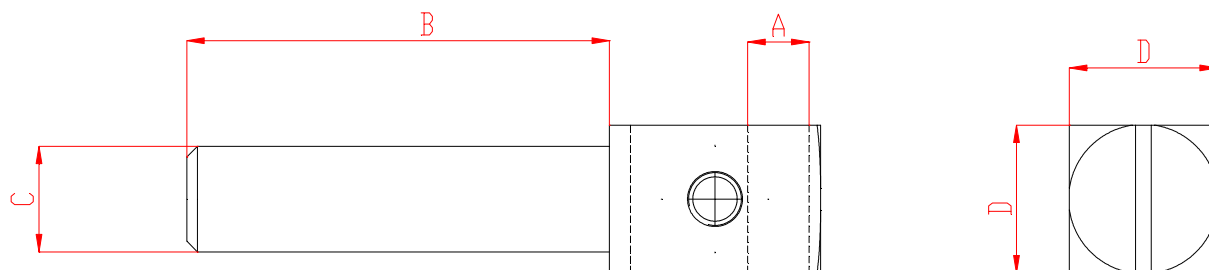
D1	D2	L1	L2	ALLOY	REF	CODE
4	10	2,5	18	CuCrZr	ER 122 Ø 4	80018152
5	10	2,5	18	CuCrZr	ER 122 Ø 5	80008249
6	10	2,5	18	CuCrZr	ER 122 Ø 6	80018800
8	10	2,5	15	CuCrZr	ER 122	80001566
8	10	2,5	25	CuCrZr	ER 122 LG 25	80001621
8	10	2,5	15	CuCoBe	ER 123	80001567
3	10	2,5	18	Mo	ERM 3	80015618
4	10	2,5	18	Mo	ERM 4	80015617
5	10	2,5	18	Mo	ERM 5	80019779
6	10	2,5	18	Mo	ERM 6	80015616
8	10	2,5	15	Mo	ERM 8	80001568
3	10	2,5	18	W	ERW 3	80015615
4	10	2,5	18	W	ERW 4	80015614
5	10	2,5	18	W	ERW 5	80015007
6	10	2,5	18	W	ERW 6	80015616
8	10	2,5	15	W	ERW 8	80001569

BARS FOR ELECTRODES

DIAMETRE (mm)	LENGTH (mm)	CuCrZr	CuCrBe	Moly	Tungstene	Cupro Tungstene
		REF	REF	REF	REF	REF
2,5	300			M2300	W2300	
3	300			M3300	W3300	
4	300			M4300	W4300	CT4350
6	300	6300	CB6300	M6300	W6300	CT6350
8	300	8300	CB8300	M8300	*W8300	CT8350
10	300	10300	CB10300	M10300	W10300	CT10350
12	300	12300	CB12300	M12300	W12300	
16	300	16300	CB16300	M14300	W14300	
18	300	18300			W16300	
20	300	20300				

* : available in LG 150 mm. REF W8150,

STANDARD ELECTRODE HOLDERS

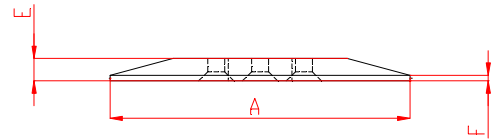
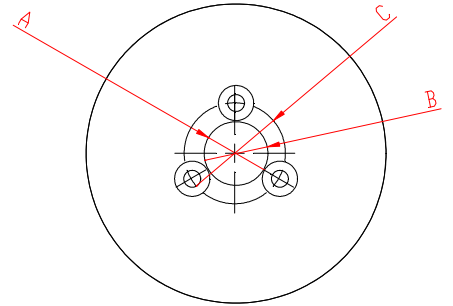
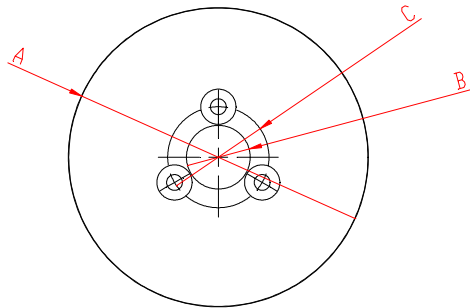


REF	REFERENCE	CODE	Ø A	B	Ø C	D
3	PE 3 58 10	80001781	3	58	10	Ø10
1	PE 6 40 10	80001782	6	40	10	14
1	PE 6 40 12	80001783	6	40	12	14
1	PE 10 40 10	80001784	10	40	10	16
1	PE 10 46 12	80001785	10	46	12	16
2	PE 10 63 18	80001786	10	63	18	22
1	PE 12 41 10	80001787	12	41	10	22
1	PE 12 41 12	80001788	12	41	12	22
2	PE 12 46 16	80001789	12	46	16	22
2	PE 12 71 16	80001790	12	71	16	22
2	PE 12 65 18	80001791	12	65	18	22
4	PER 12 65 18	80001792	12	65	18	22
2	PE 16 64 18	80001793	16	65	18	22
4	PER 16 65 18	80001794	16	65	18	22
2	PE 18 45 18	80001795	18	45	18	22
2	PE 18 70 18	80001801	18	70	18	22

PE : Electrode holder

PER : Water cooled electrode holders

STANDARD WEELS



A	B	C	E	F	ALLOY	CODE
80	17	27	6		CuCoBe	80006737
80	17	27	6	1.5	CuCoBe	80005962

OTHER DIMENSIONS AND SHAPES ACCORDING TO CUSTOMER SPECIFICATIONS